

# House & Land Package.

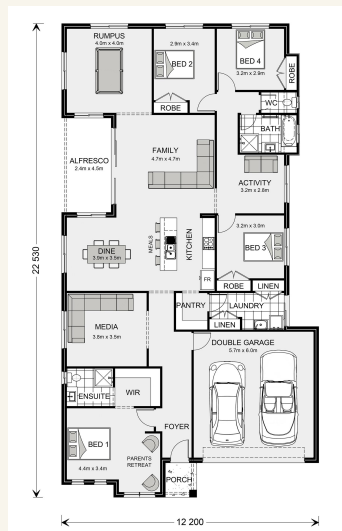


House and land package from \$459,797\*

Address: Lot 51 Goldenvue Estate (551sqm), Winter Valley

Inclusions:

- + H1 Waffle Pod Slab Included
- + 600mm Westinghouse Appliances
- + 2440mm ceiling heights throughout
- + Driveway Allowance
- + Carpet & Tiles throughout
- + Dishwasher Included



\*Images and photographs may depict fixtures, finishes and features either not supplied by G.J. Gardner Homes or not included in any price stated. These items include furniture, swimming pools, pool decks, fences, landscaping - including planter boxes, retaining walls, water features, pergolas, screens and decorative landscaping items such as fencing and outdoor kitchens and barbecues. For detailed home pricing, please talk to a new homes consultant.

Springbrook 246 - Express Series

4 2 2

Give us a call or drop in for a chat today.

Office:

Ballarat

1/1021 Sturt St, Ballarat Vic 3350

Ballarat Regional Developments Pty Ltd CDB-U  
50435

Brenden Barclay

New Home Consultant

Call: 0409410911

Email: [brenden.barclay@gjgardner.com.au](mailto:brenden.barclay@gjgardner.com.au)

Call: 03 5334 4099

Email: [ballarat@gjgardner.com.au](mailto:ballarat@gjgardner.com.au)

Or visit [gjgardner.com.au](http://gjgardner.com.au)

Welcome **home.**

G.J. Gardner. **HOMES**